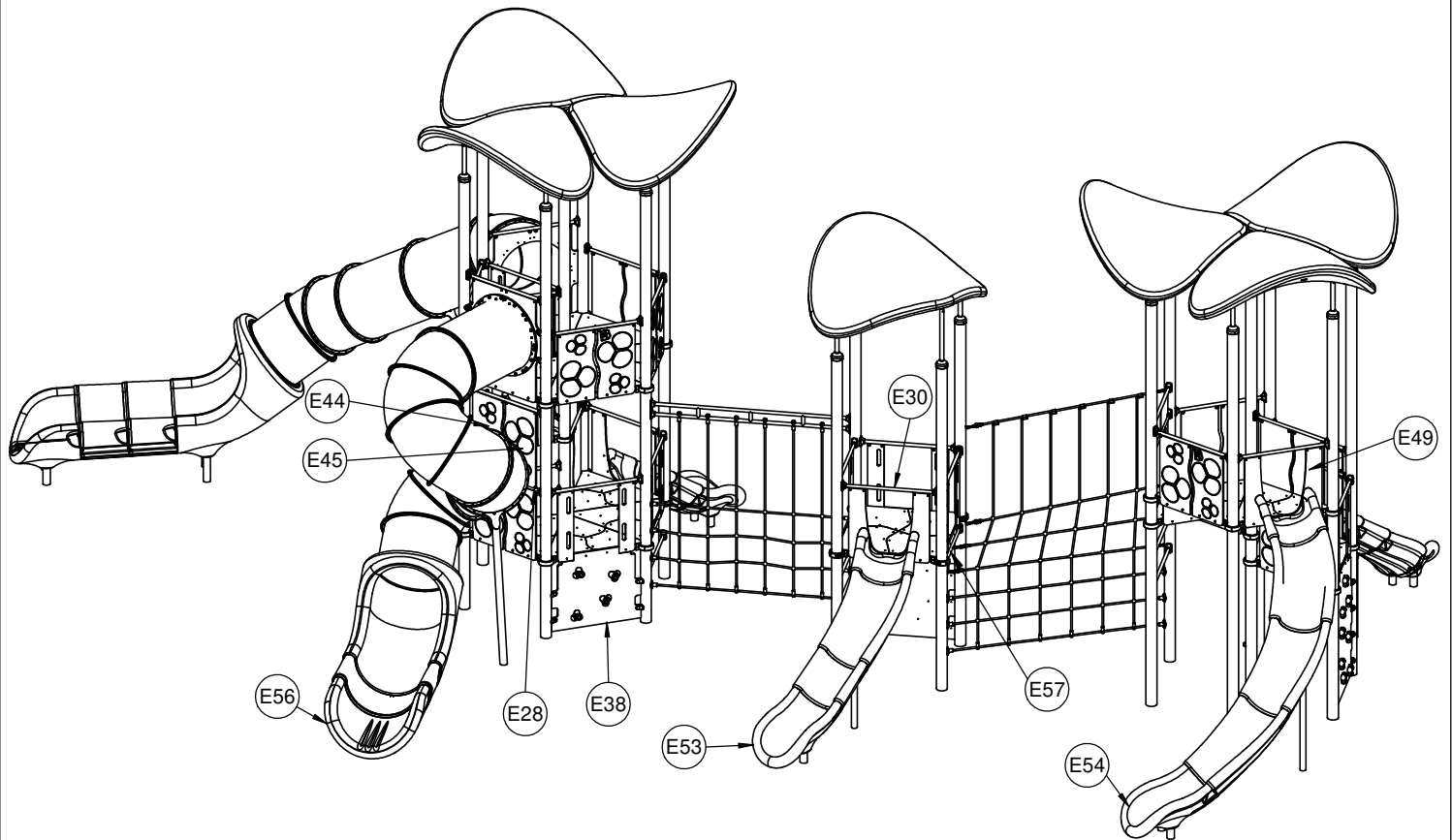
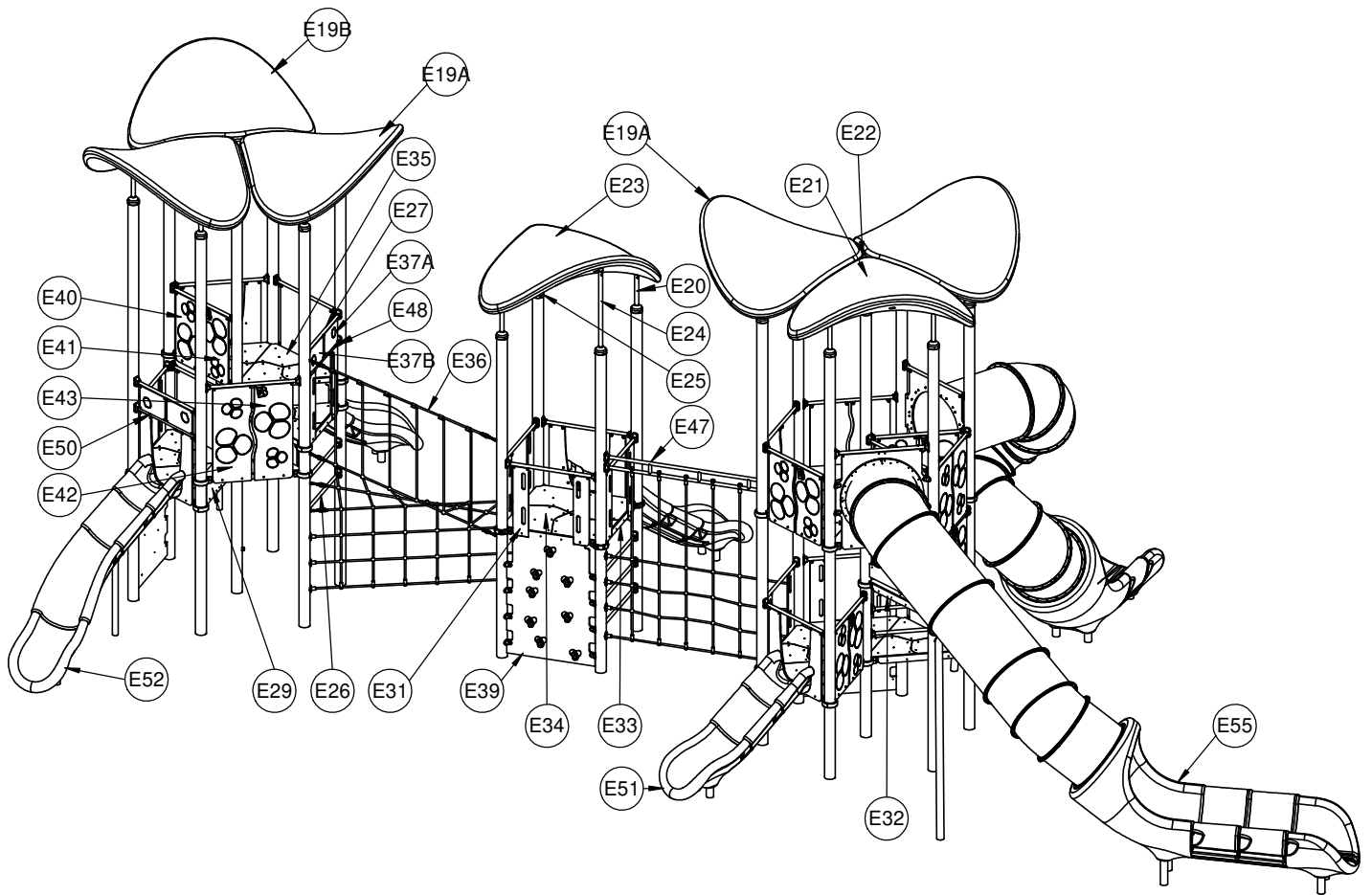
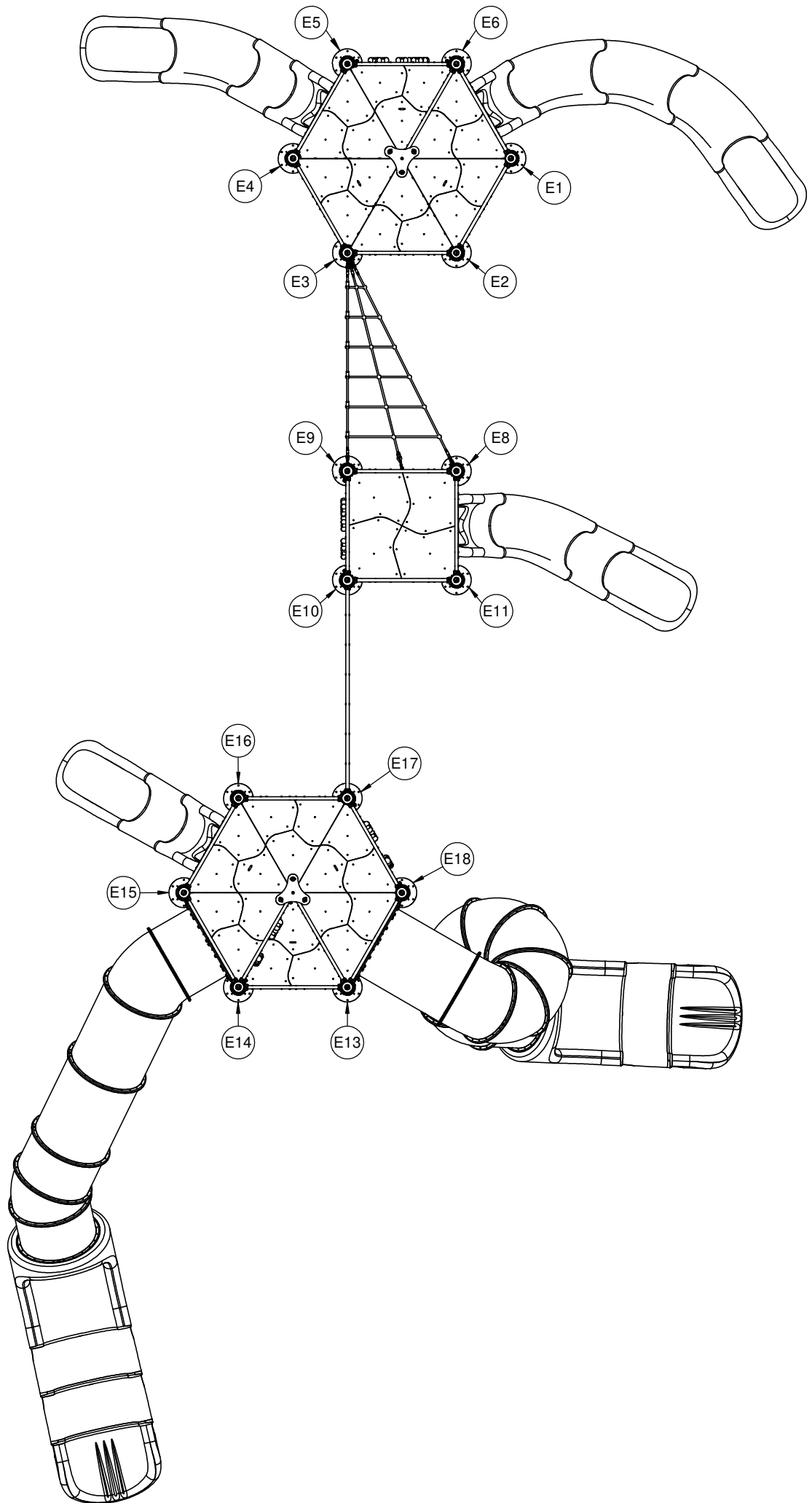


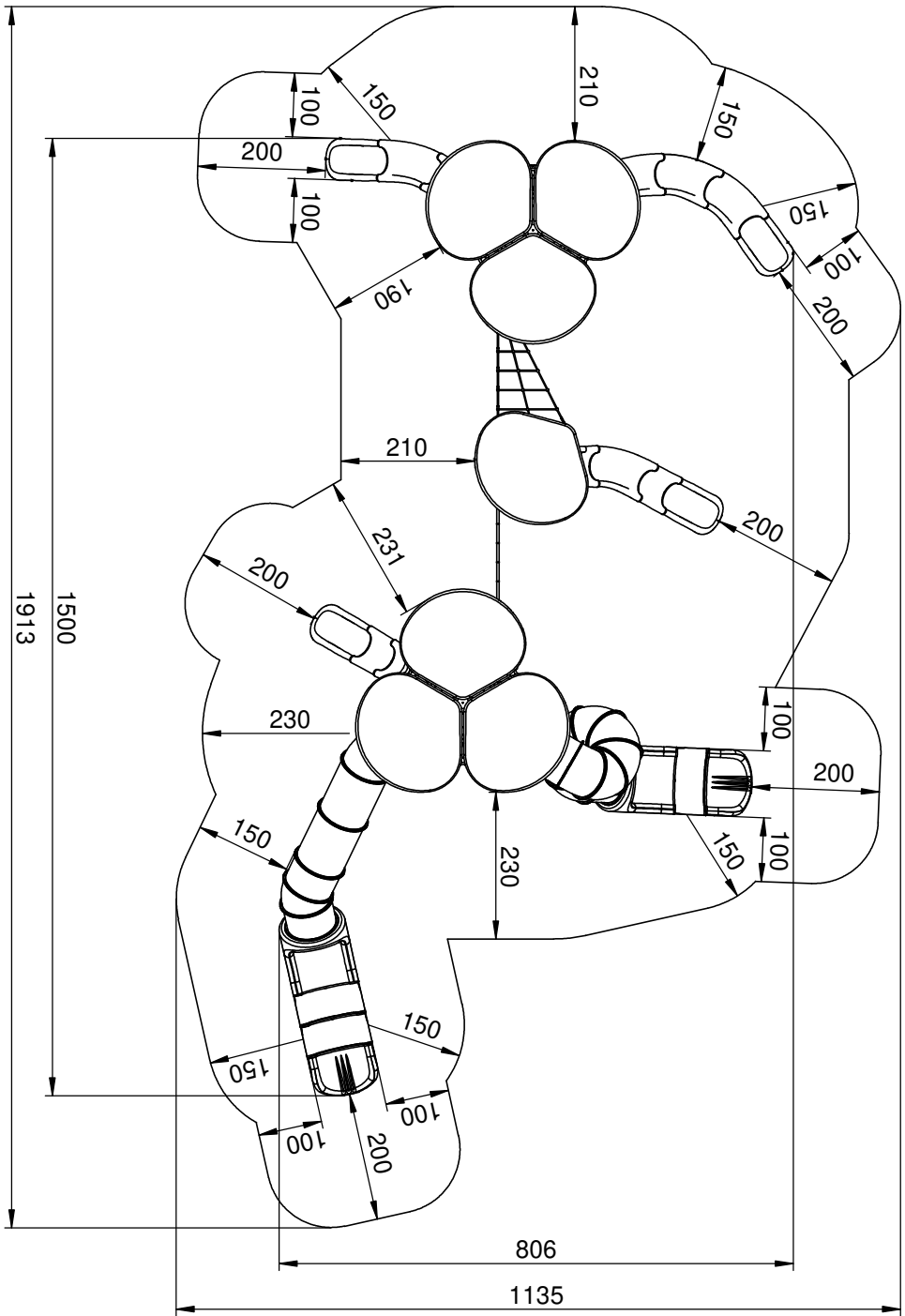
1212 N



1212 N



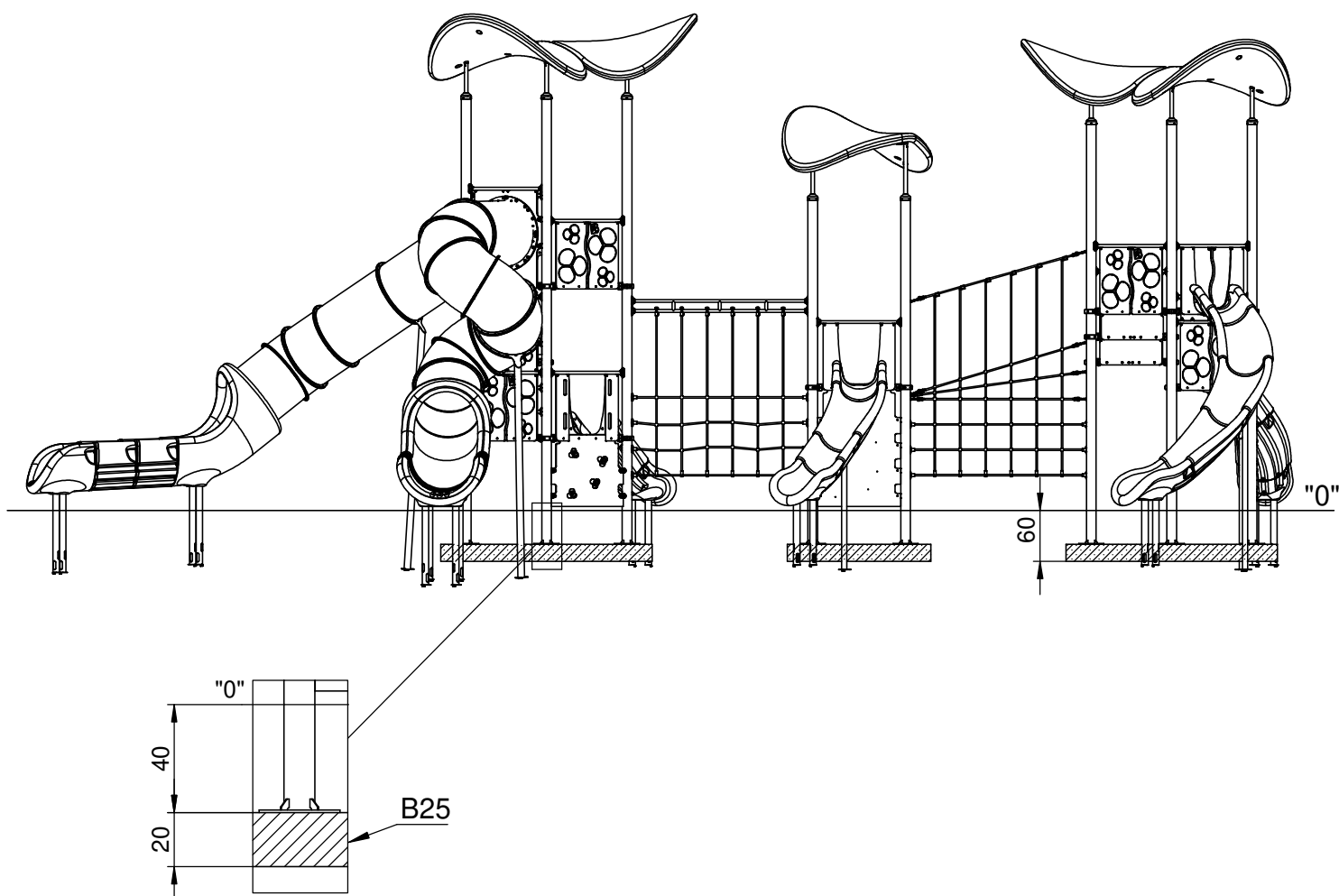
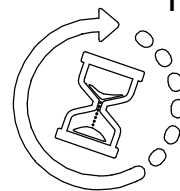
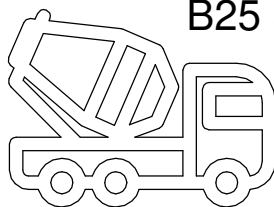
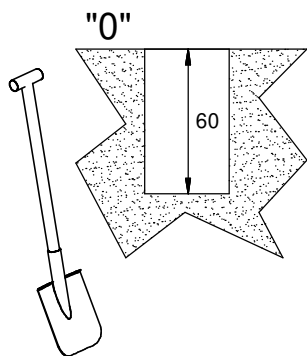
Technical drawing of a robotic arm, showing dimensions in inches. The drawing includes a side view and a top view. The side view shows a vertical dimension of 588 inches and a horizontal dimension of 270 inches. The top view shows a horizontal dimension of 240 inches and a vertical dimension of 180 inches. Other dimensions include 210, 180, 150, 90, and 0.0 inches.



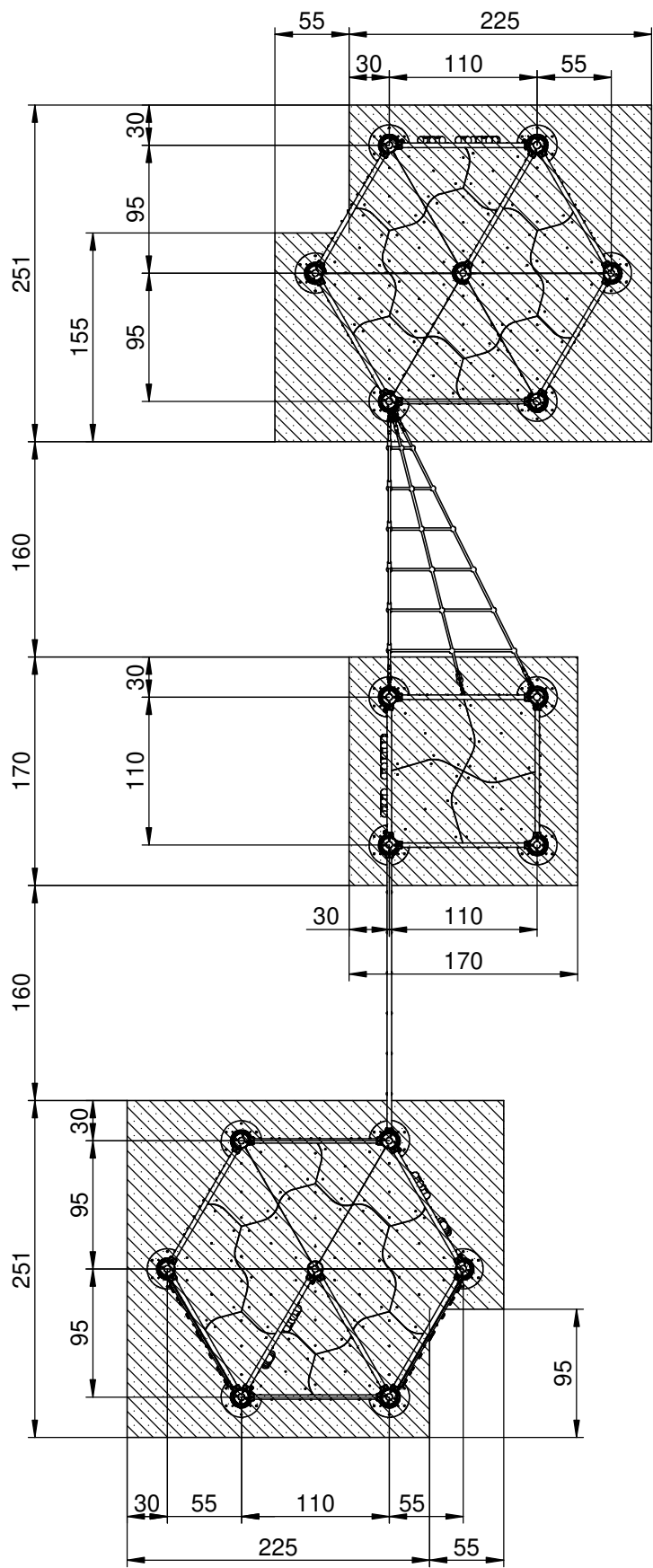
1218 F40

B25 3,2 m³

min. 48h



1212 F40



1212N

